

## Tri-Band Communication Multi Pump Control



# Radio - Cellular - Satellite

### Special Features for Broadcaster 2

- The way we communicate:  
Radio, Cellular, Satellite
- Redundant communication
- Triple safety feature
- Multi pump unit flexibility
- Auto boost pump cruise control
- Multi screen for multi pump set ups

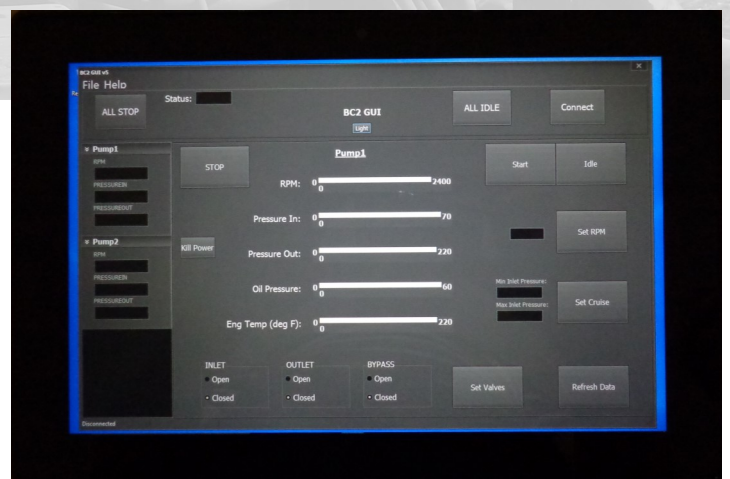


Tri-band communication system for North America using peer-to-peer 900 MHz radio network, and/or cellular, and/or satellite multi-point network. As well a dual communication system which can be utilized world wide by mobile cell phone network and/or satellite. The communication module will automatically switch to the most economic and strongest communication system. Control and display information on and from the remote controller at the operators drivers seat regardless of obstacles, elevation, or distance.

Broadcaster 2 is compatible with all mechanical or ECU engines including J1939 Can Bus Tier 4 Final (Euro stage 4), and VFD driven motors regardless of age.

*Broadcaster 2 system is ideal for use in the following applications:*

- Agricultural
- Irrigation
- Industrial
- Municipal
- Oil/Gas



Tri Band - Multi Pump - 1 pump... 2 pumps... 3 pumps... 4 or more

## System Overview

- Provides remote control of up to Qty 3 — **Electronic engines** within 3 km (2.0mi) range using the standard **900 MHz radio communications** with 1 hop technology
- Infinite range possible with cellular/satellite option
- Single (log in – log out) or multi-pump display options

## Engine Controller with Standard Radio Communications (base kit)

- BC-2 Communications module (radio)
- Boost Pump Cruise Control (Auto throttle based on inlet pressure)
- Remote Engine Start/Stop, includes warning beacon and audible alarm
- Remote Electrical System disconnect “Power Down”. (Emulates turning off key switch)
- Rocker switch throttle control (digital, resistance)
- Engine coolant temperature and oil pressure display
- Inlet and Outlet pressure sensors and display
- Four engine speed pre-set buttons
- - 50 RPM speed increments
- Manual throttle control
- Radio signal strength display
- Heated LCD back lit display screen with push buttons (configurable)
- 5 Relay Pack (SPST) ON/OFF or Adjustable ON time – each relay  
*Can be used to control 2 electrohydraulic valves independently (double acting), no proximity sensor capability*
- 21 pin circular connector for quick connection to engine
- Weather proof enclosure

## Options

- Cell Phone/ Satellite Communications module -attaches to BC-2 communications module to create tri-band communication (redundant signals are simultaneously broadcasted over radio, and cellular or satellite connections)
- TSC1 throttle control — contact Sunova WorX for details
- Mechanical throttle control — CANbus
- Telescoping Antenna Pole
- Pump Recirculate Software — used with 5 Relay Pack to shift double acting electro-hydraulic from pump to bypass (recirculate)

## Remote Controller (base kit)

- 10” Windows based Tablet
- Adjustable tablet holder with mounting hardware
- BC-2 communication module
- 900 MHZ Radio Module — standard
- Single pump and multi pump display software
  - Radio communications – log in and log out to see each pump
  - Cell Phone/Satellite communications – multi screen